



Casper Interagency Dispatch Center 2018 End of Year Report



Dispatch Zone: Casper Interagency Dispatch Center coordinates resources and incidents for BLM High Plains District, BLM High Desert District, Medicine Bow-Routt National Forest (WY), Thunder Basin National Grassland, State of Wyoming lands, and seventeen counties in Wyoming. The Casper Dispatch Zone spans from the Northern Wyoming/ Montana border south along the Southern Big Horns and Rattlesnakes, then East to the South Dakota and Nebraska state lines, and West to the Utah Border (basically the South half of Wyoming).

2018 Summary: 2018 was the first year of the new combined Dispatch Centers of Rawlins and Casper. We moved in on Nov 13, 2017 and spent the winter months getting everything set up and operational. The Grand Opening occurred on May 4, 2018. We hired a new FS Assistant Center Manager, and 2 new Dispatchers. The remaining folks came from either Casper Dispatch (CM, Aviation Dispatcher, and Lead Dispatcher) or Rawlins Dispatch (ACM). We also were able to fill 3 seasonal dispatch positions with 2 coming from Rawlins Dispatch and the third was a wounded firefighter.

Overall, 2018 was a busy year for the Center. We started 7 day staffing in early May and stayed at 7 day staffing till the first part of November. Expanded Dispatch opened up early for the Badger Creek fire on the Med/Bow Routt Forest on June 10th. Expanded stayed open for the majority of the summer, closing down after the Ryan Fire, also on the Med/Bow Routt National Forest approximately in mid-October. We had over 700 incidents, including 109 lightning caused fires for approximately 51,506 acres, 174 human caused fires for approximately 53,532 acres, and numerous false alarms. We also had several Type 2 and Type 3 Incident Management Teams in the zone along with one NIMO Team.

*****The 2018 numbers reflect the new combined center while the previous years reflect only Casper Dispatch*****

Staffing:

Center Manager: Rob Neibauer

Assistant Center Manager: Gary Batchelder

Assistant Center Manager: Josh Schake

Aircraft Dispatcher: Kyle Adams

Lead Dispatcher: Adam Spaulding

Intelligence Dispatcher: Rachel Simpson

IA Dispatcher: Shannon Daubin

Seasonal Dispatcher: Johanna Horn

Seasonal Dispatcher: Caitlyn Edwards

Seasonal Dispatcher: Brenden Bustos

Cooperators:

Albany County Fire, Campbell County Fire

Carbon County Fire, Converse County Fire

Goshen County Fire, Johnson County Fire

Laramie County Fire, Lincoln County Fire

Niobrara County Fire, Platte County Fire

Sheridan County Fire, Sweetwater County Fire

Natrona County Fire, Uinta County Fire

Weston County Fire

Wyoming State Forestry - Districts 1, 2, 3, 4, 5

Medicine Bow-Routt National Forest / Thunder Basin National Grassland

High Plains District - BLM, High Desert District - BLM

National Park Service - Ft. Laramie National Historic Site

Incident Actions

Our workload is measured by documenting incident actions. An incident action is any action taken by dispatch to assist our agencies, cooperators or vendors. Each new incident is assigned a number for tracking purposes and then entered into a database. Below are examples of what type of actions we record.

Wildland Fires - Fires reported to CPC where agency resources respond and suppress.

Resource Orders - Mobilizing resources in and out of zone.

False Alarms – A reported fire where resources respond but are unable to locate incident.

Flight Following – Tracking of agency aircraft traveling through CPC's dispatch zone.

Dispatch Assist - Actions where only CPC assists cooperators. Includes processing spot weather, smoke reports, county fire notifications and fires reported out of our zone of response.

AD Hire - Administrative services involved with hiring emergency firefighter personnel.

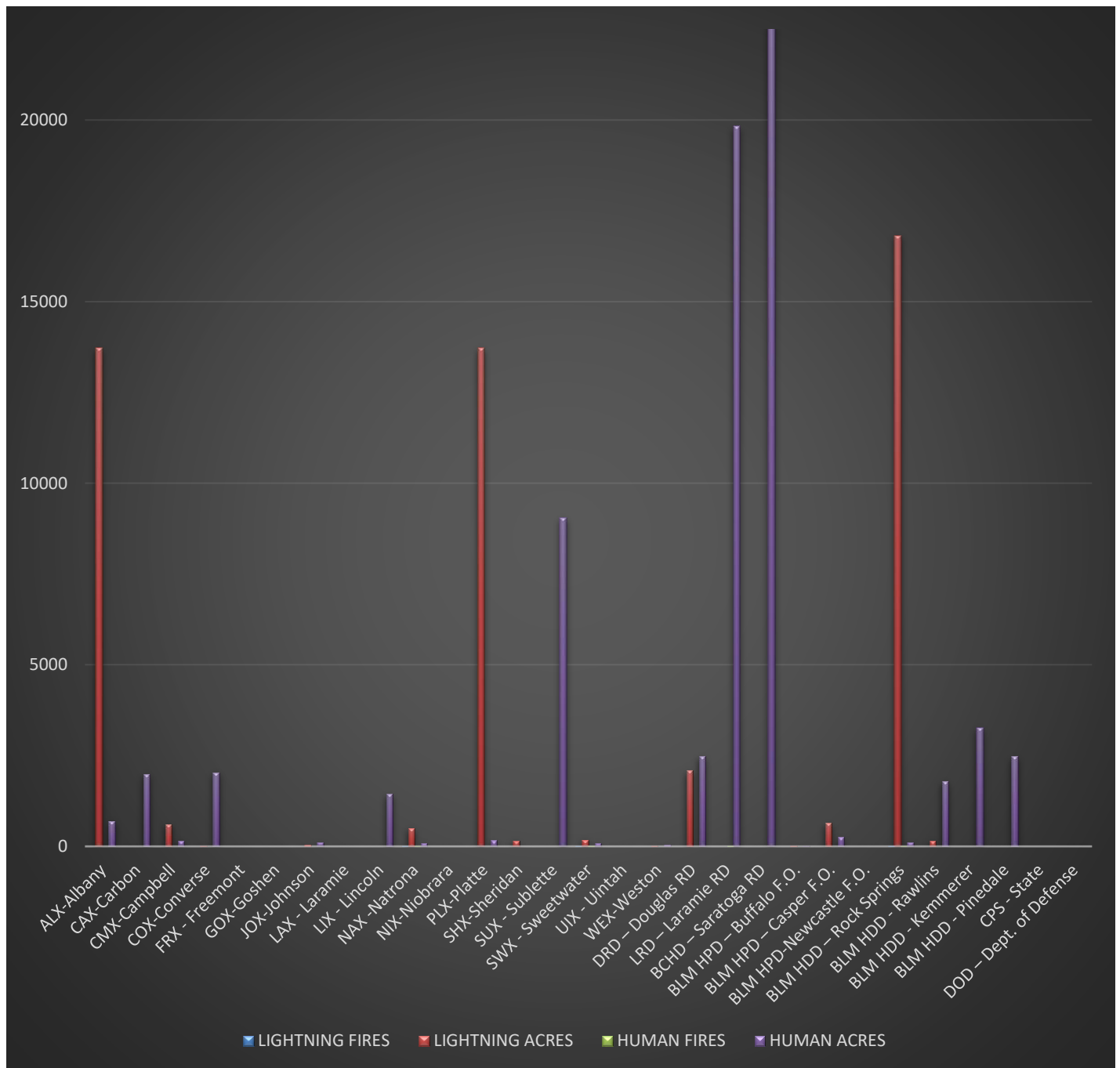
Rx Fire – Controlled burns where dispatch provides services such as resource mobilization, cooperator notifications, and dispatch staffing.

Fuels Reduction - Mechanical thinning projects for urban interface and natural resource benefits.

Other - Other actions not defined above.

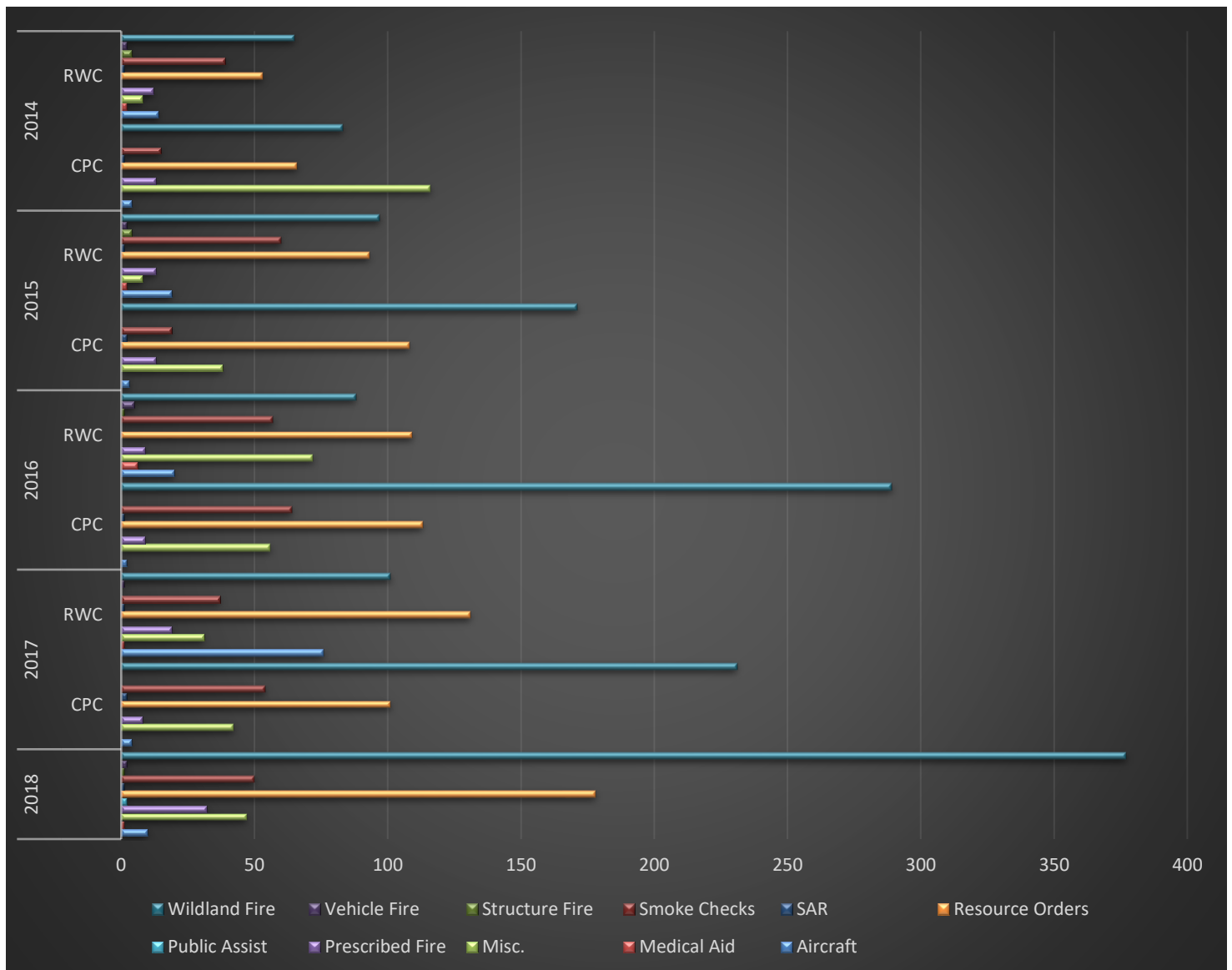
2018 Fire Activity

	LIGHTNING		HUMAN	
AGENCY	FIRES	ACRES	FIRES	ACRES
ALX-Albany	4	13,725	5	689
CAX-Carbon	1	0	6	1,987
CMX-Campbell	7	607	5	144
COX-Converse	5	20	7	2,020
FRX - Freemont	0	0	0	0
GOX-Goshen	0	0	0	0
JOX-Johnson	8	47	6	105
LAX - Laramie	1	0	0	0
LIX - Lincoln	0	0	3	1,437
NAX -Natrona	11	495	21	88
NIX-Niobrara	0	0	2	7
PLX-Platte	1	13,716	5	157
SHX-Sheridan	1	155	0	0
SUX - Sublette	1	0	5	9,042
SWX - Sweetwater	11	180	30	87
UIX - Uintah	0	0	7	9
WEX-Weston	2	29	4	34
DRD – Douglas RD	4	2,086	3	2,472
LRD – Laramie RD	1	0	14	19,812
BCHD – Saratoga RD	0	0	1	22,639
BLM HPD – Buffalo F.O.	5	26	3	22
BLM HPD – Casper F.O.	4	632	5	248
BLM HPD-Newcastle F.O.	0	0	1	0
BLM HDD – Rock Springs	27	16,808	23	110
BLM HDD - Rawlins	10	155	6	1,794
BLM HDD - Kemmerer	0	0	1	3,256
BLM HDD - Pinedale	0	0	3	2,470
CPS - State				
DOD – Dept. of Defense	0	0	0	0
Total	104	48,681	166	68,629



Dispatch Incidents 5 Year Trend:

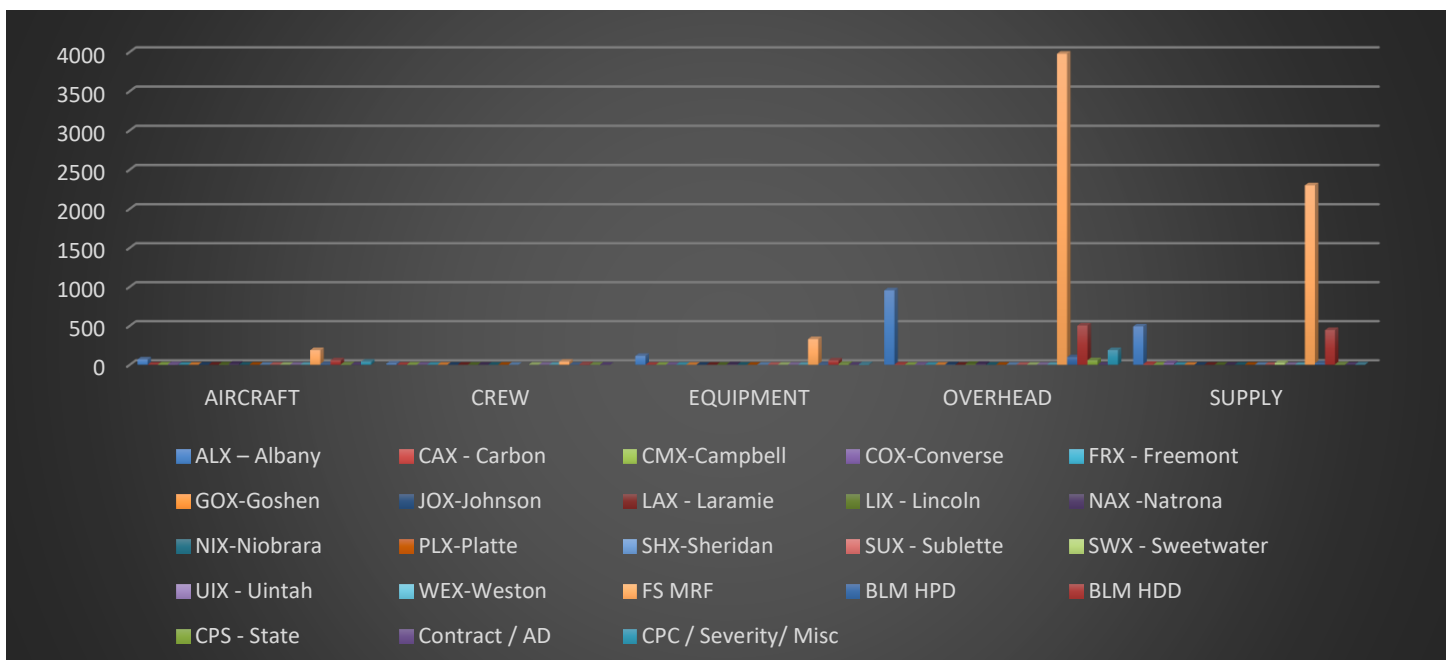
	2018*	2017		2016		2015		2014	
INCIDENT TYPE		CPC	RWC	CPC	RWC	CPC	RWC	CPC	RWC
Aircraft	10	4	76	2	20	3	19	4	14
Medical Aid	1	-	1	-	6	-	2	-	2
Misc.	47	42	31	56	72	38	8	116	8
Prescribed Fire	32	8	19	9	9	13	13	13	12
Public Assist	2	-	-	-	-	-	-	-	-
Resource Orders	178	101	131	113	109	108	93	66	53
SAR	1	2	1	1	0	2	1	1	1
Smoke Checks	50	54	37	64	57	19	60	15	39
Structure Fire	1	-	0	-	1	-	4	-	4
Vehicle Fire	2	-	1	-	5	-	2	-	2
Wildland Fire	377	231	101	289	88	171	97	83	65
Totals	701	442	398	534	367	354	299	298	200



Resource orders per Unit for 2018 (total resource orders)

*Approximate totals, includes all filled, cancelled and unable to fill (UTF) orders

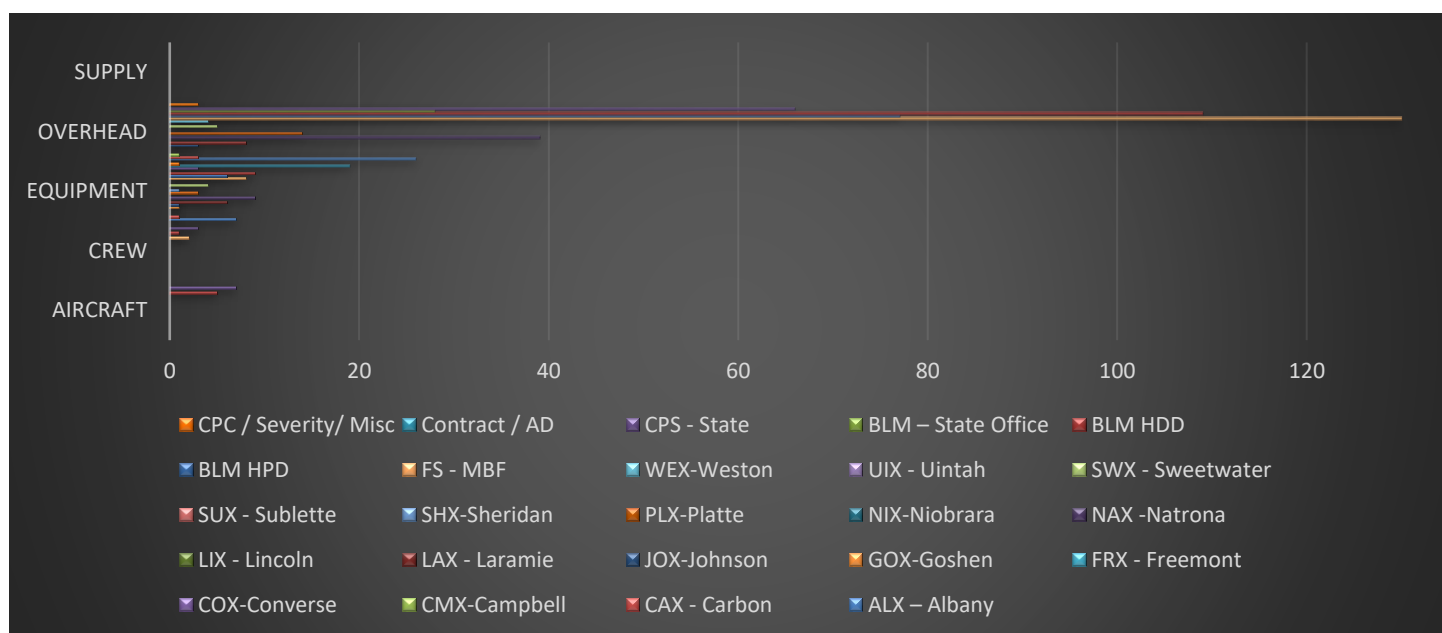
AGENCY	AIRCRAFT	CREW	EQUIPMENT	OVERHEAD	SUPPLY
ALX – Albany	69	16	115	954	492
CAX - Carbon	1	-	1	3	10
CMX-Campbell	3	2	-	-	4
COX-Converse	8	1	-	3	20
FRX - Freemont	-	-	-	-	-
GOX-Goshen	-	-	-	-	-
JOX-Johnson	2	-	-	6	-
LAX - Laramie	-	-	-	-	-
LIX - Lincoln	5	-	-	11	-
NAX -Natrona	13	1	5	12	1
NIX-Niobrara	-	-	-	-	-
PLX-Platte	-	-	-	-	-
SHX-Sheridan	1	-	-	-	-
SUX - Sublette	-	-	-	-	1
SWX - Sweetwater	-	1	-	-	24
UIX - Uintah	-	-	-	-	-
WEX-Weston	-	-	-	-	-
FS MRF	188	39	330	3977	2300
BLM HPD	10	1	8	99	21
BLM HDD	58	8	56	504	446
CPS - State	5	2	12	59	7
Contract / AD	-	-	-	-	-
CPC / Severity/ Misc	39		7	188	4
Approximate Total:	402	71	534	5816	3330



Resource Orders per Unit for 2018 (outgoing resource orders)

*Approximate totals

AGENCY	AIRCRAFT	CREW	EQUIPMENT	OVERHEAD	SUPPLY
ALX – Albany	-	-	7	26	-
CAX - Carbon	-	-	1	3	-
CMX-Campbell	-	-	-	1	-
COX-Converse	-	-	-	-	-
FRX - Freemont	-	-	-	-	-
GOX-Goshen	-	-	1	-	-
JOX-Johnson	-	-	1	3	-
LAX - Laramie	-	-	6	8	-
LIX - Lincoln	-	-	-	-	-
NAX -Natrona	-	-	9	39	-
NIX-Niobrara	-	-	-	-	-
PLX-Platte	-	-	3	14	-
SHX-Sheridan	-	-	1	-	-
SUX - Sublette	-	-	-	-	-
SWX - Sweetwater	-	-	4	5	-
UIX - Uintah	-	-	-	-	-
WEX-Weston	-	-	-	4	-
FS - MBF	-	2	8	130	-
BLM HPD	-	-	6	77	-
BLM HDD	5	1	9	109	-
BLM – State Office	-	-	-	28	-
CPS - State	7	3	3	66	-
Contract / AD	-	-	19	-	-
CPC / Severity/ Misc	-	-	1	3	-
Approximate Total:	12	6	79	516	-



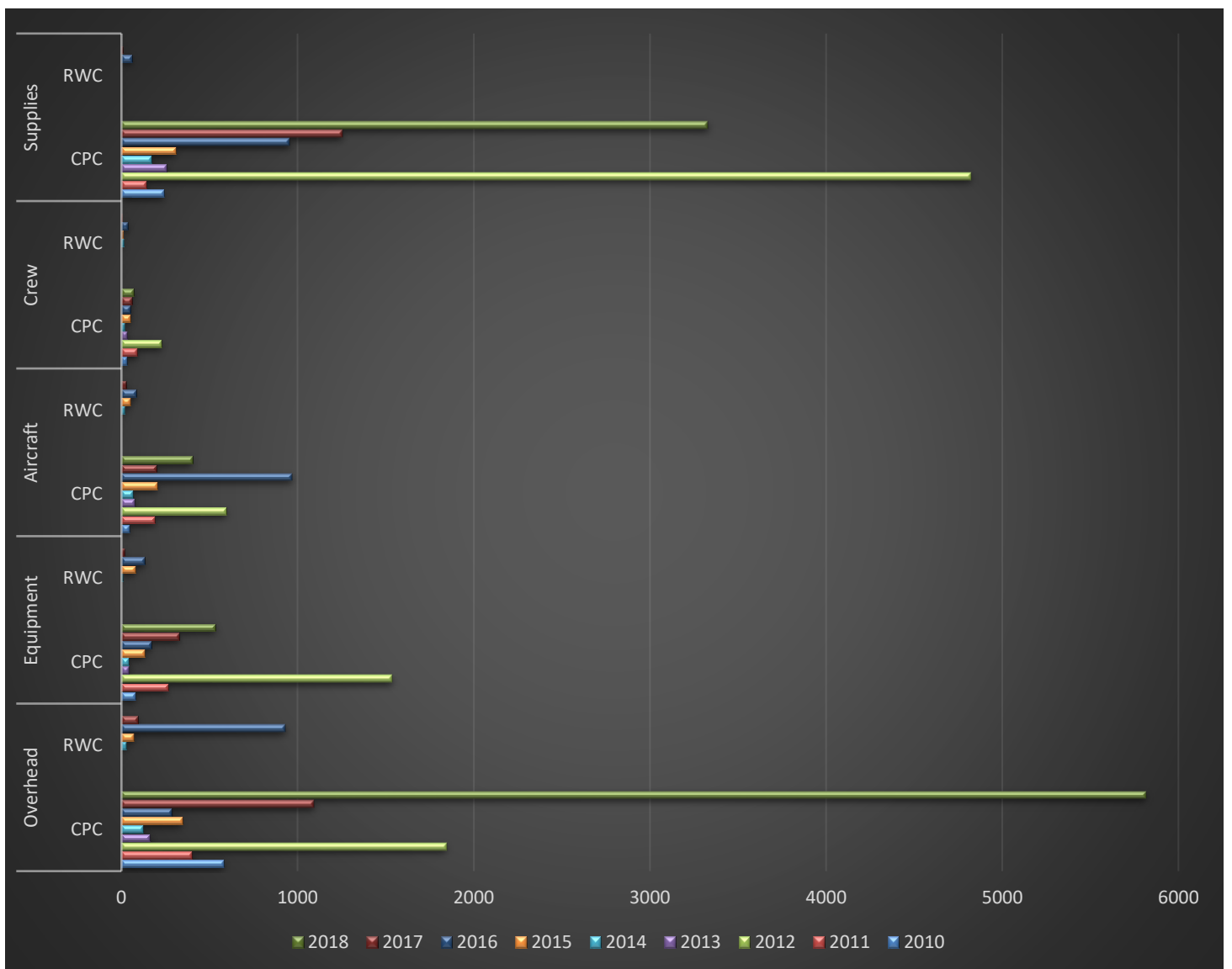
Resource orders per Unit for 2018 (incoming resource orders)

*Approximate totals,

AGENCY	AIRCRAFT	CREW	EQUIPMENT	OVERHEAD	SUPPLY
ALX – Albany	48	12	71	53	-
CAX - Carbon	-	-	1	-	-
CMX-Campbell	-	-	-	-	-
COX-Converse	1	-	-	-	-
FRX - Freemont	-	-	-	-	-
GOX-Goshen	-	-	-	-	-
JOX-Johnson	2	-	-	2	-
LAX - Laramie	-	-	-	-	-
LIX - Lincoln	1	-	-	1	-
NAX -Natrona	6	1	5	2	-
NIX-Niobrara	-	-	-	-	-
PLX-Platte	-	-	-	-	-
SHX-Sheridan	-	-	-	-	-
SUX - Sublette	-	-	-	-	-
SWX - Sweetwater	-	-	--	-	-
UIX - Uintah	-	-	-	-	-
WEX-Weston	-	-	-	-	-
FS - MBF	153	38	202	285	-
BLM HPD	2			13	-
BLM HDD	24	2	31	33	-
CPS - State	-	-	5	7	-
Contract / AD	-	-	-	-	-
CPC / Severity/ Misc	21	-	3	22	-
Approximate Total:	258	53	318	418	-

Resource Order 9 Year Totals: (approximate totals)

	Overhead		Equipment		Aircraft		Crew		Supplies		Total	
Year	CPC	RWC	CPC	RWC	CPC	RWC	CPC	RWC	CPC	RWC	CPC	RWC
2010	582	-	81	-	44	-	29	-	240	-	896	-
2011	398	-	263	-	189	-	88	-	141	-	1079	-
2012	1845	-	1538	-	595	-	227	-	4824	-	9029	-
2013	163	-	42	-	76	-	33	-	256	-	570	-
2014	123	27	43	6	66	19	19	13	171	-	422	65
2015	344	69	134	77	205	51	52	9	306	-	1041	206
2016	286	931	168	132	968	84	51	36	954	61	2427	1244
2017	1093	93	329	19	197	26	59	5	1256	7	2934	150
2018	5816	-	534	-	402	-	71	-	3330	-	10153	-



2018 Fires over 10 Acres:

Fire Name	Start Date	Cause	Acres	Agency
Bessmer	2/17/18	H	10.86	Natrona County
Mill	04/16/18	H	28.28	Carbon County
Raff	4/25/18	H	55.40	Sublette County
143	5/07/18	H	18.5	Sublette County
Badger Creek	6/10/18	H	21,310	FS – Laramie District
Boxelder	6/13/18	H	36.70	Converse County
Telephone Canyon	6/14/18	H	30	Sweetwater County
Sybill Canyon	6/15/18	L	22	BLM – Rawlins District
Purple	6/23/18	H	13	BLM – Rock Springs District
Melody	6/26/18	H	10.25	Sweetwater County
Horse Pasture	6/29/18	L	15.1	Johnson County
McKenzie	7/05/18	L	19.3	Natrona County
Baker Cabin	7/07/18	L	250.90	Natrona County
Patterson	7/07/18	L	14.4	Converse County
Fence Creek	7/08/18	L	25	Wyoming State
Shirttail Butte	7/09/18	L	143	Natrona County
Martin	7/10/18	L	51.50	Natrona County
King Draw	7/13/18	L	151.3	Sheridan County
Turner Draw	7/14/18	L	33.8	BLM – Buffalo Field Office
Reno	7/14/18	L	299.74	Campbell County
Patrick Draw	7/16/18	H	107	BLM – Rock Spring District
Coalbank	7/21/18	L	38	Natrona County
Antelope	7/23/18	H	45.40	FS – Douglas District
Black Butte	7/28/18	L	3441	BLM – Rock Springs District
Olmstead Creek	7/28/18	L	104.9	Campbell County
Wells	7/28/18	L	19	BLM – Rock Springs District
Laney Rim	7/28/18	L	13,198	BLM – Rock Springs District
Big Ridge	7/28/18	L	205.4	BLM – Rock Springs District
Bixby	7/31/18	H	247.1	Converse County
250	8/03/18	H	162	BLM – Rawlins District
Boggy Meadows	8/05/18	L	81.3	BLM - Rawlins
Glendo	8/11/18	H	137.10	Platte County
Old Dump	8/12/18	H	37	BLM – Pinedale District
Skull Creek	8/12/18	L	29.1	Weston County
Man Field	8/13/18	L	18	Albany County
Spotted Horse	8/16/18	H	110.3	Campbell County
Britania Mountain	8/26/18	L	32,089	Albany County
Aspen Springs	9/01/18	H	120.1	Lincoln County
Clarkelen	9/07/18	L	197.1	Campbell County
Evans Draw	9/07/18	H	90.90	Johnson County
Diamond	9/09/18	H	65.4	Converse County
Ryan	9/16/18	H	25,310	FS – Saratoga District
HWY 34	9/16/18	H	120	Albany County
Waltman Draw	9/16/18	H	44.4	Natrona County
Bishop	9/17/18	H	52.1	Campbell County
Casper Creek	9/17/18	H	15.8	Natrona County

West Tillard	9/17/18	H	3782	FS - Douglas
Pumkin Vine	9/18/18	L	50	Albany County
Logan Draw	9/23/18	H	582.14	Converse County
Hwy 450	9/23/18	H	29	Weston County
Antelope Creek	10/17/18	H	38.80	Converse County

Wildland Fires and RX Burns – 10 Year Average:

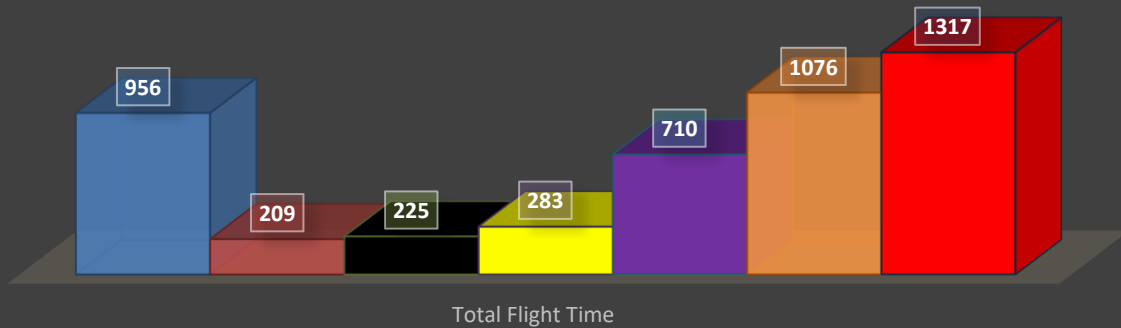
Year	Human Fires	Acres	Lightning Fires	Acres	RX Burns	Acres	Total Fires	Total Acres
2009	39	467	59	1,650	19	3,085	117	6,629
2010	91	55,709	69	4,159	8	3,234	160	59,868
2011	54	10,891	240	64,296	17	4,782	294	75,188
2012	126	61,743	226	278,465	N/A	N/A	352	340,208
2013	22	83	87	457	N/A	2,056	109	540
2014	40	2,536	41	831	17	390	81	3,367
2015	57	12,752	81	8,874	13	1,070	138	21,626
2016	102	9,175	155	38,235	N/A	N/A	257	47,409
2017	102	3,931	144	69,014	N/A	N/A	246	72,946
2018	174	53,532	109	51,506	17	1850	283	105,039

CPC AVIATION REPORT 2018

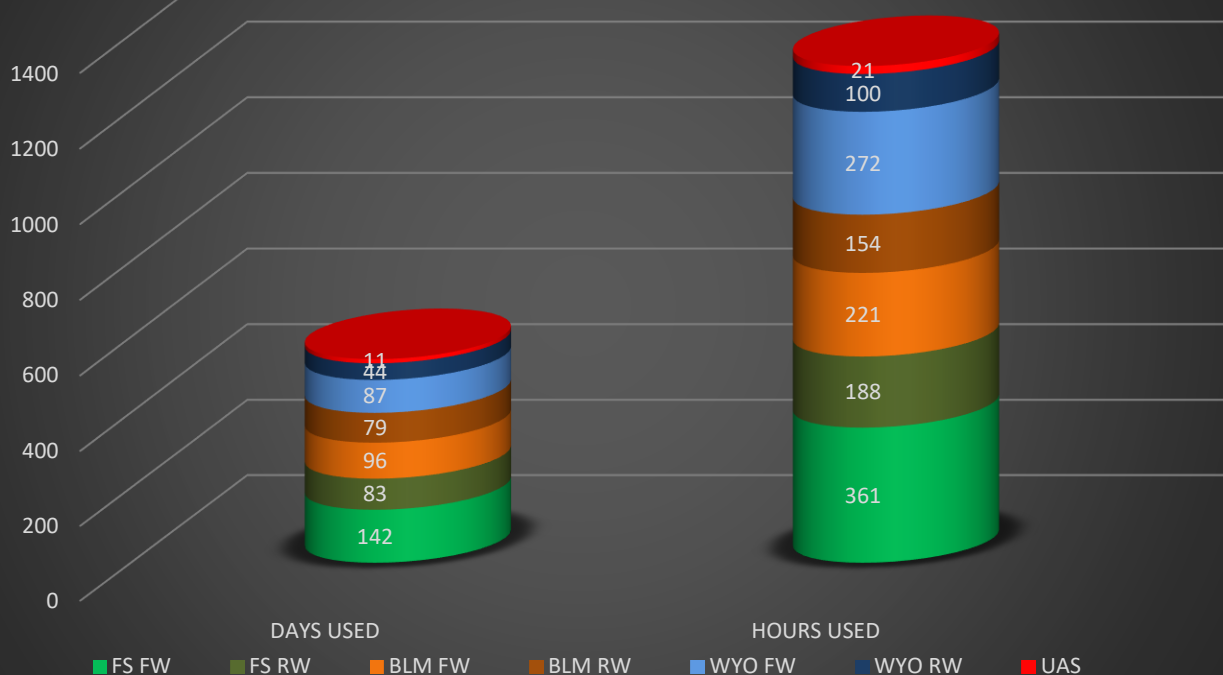
This past season, aviation dispatching at Casper Interagency Dispatch Center was a new enterprise. We had a new building, a new radio system, new equipment, new aircraft, new SEAT Bases, new personnel, new dispatchers, and a new dispatch zone. Our dedicated aircraft dispatchers proved they were up to the challenge logging 1314 hours of flight following for individual aircraft for the 2018 fire season. Our SEAT bases were equally as active supporting the dispatch zone and region dropping 196 loads of retardant on fires (103-Casper; 93-Rawlins) at a cost of \$1,198,665.96. As well as fire, our aircraft dispatchers also supported wildlife flights, forest health flights, admin flights, and UAS flights. But most important of all, and a testimony to the professional pilots and mechanics working in our dispatch zone, we had no aviation mishaps or accidents reported this year.

YEARLY FLIGHT HOURS COMPARISON

■ 2012 ■ 2013 ■ 2014 ■ 2015 ■ 2016 ■ 2017 ■ 2018



2018 CPC FLIGHTS

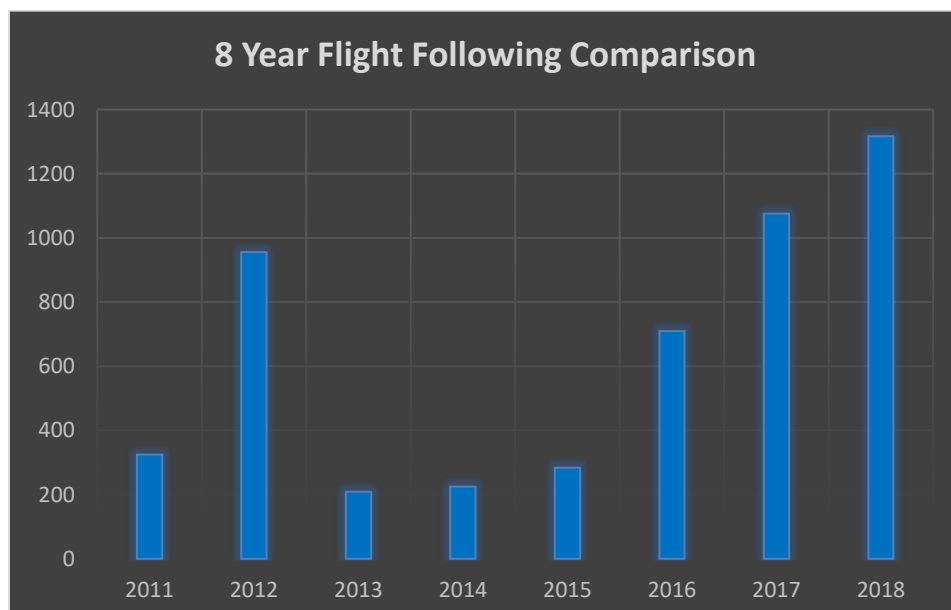


Casper Dispatch Flight Following Hours 2018:

Tactical Aircraft	275
Single Engine Airtankers (SEAT)	352
Heavy Airtanker	110
Rotor Wing	442
Smokeyjumpers	7
Forest Health Flights	10
MAFFS	4
Miscellaneous	114
Approximate Total Hours	1317

8 Year Flight Follow Comparison:

2011 Flight Following Hours	325.0
2012 Flight Following Hours	956.0
2013 Flight Following Hours	209.0
2014 Flight Following Hours	225.25
2015 Flight Following Hours	283.25
2016 Flight Following Hours	710.0
2017 Flight Following Hours	1076
2018 Flight Following Hours	1317



CPC / RWL SEAT Bases



Casper SEAT base opened early June.

Gillette SEAT base did not open due to Facility issues.

Rawlins SEAT base opened Late July.

All bases closed by late September. There were 196 SEAT sorties flown out of CPC and RWL bases and 130,625 gallons of retardant supplied from CPC and RWL bases to incidents in Wyoming, South Dakota, Montana, Utah, and Colorado.

2TJ Helitack



Wyoming State Forestry Division's Helicopter 2TJ flew 34 missions for a total of approximately 141 flight hours: 22 were fires, two RX fires for the BLM, one for HDD and one for HPD, 3 prepositions flights (2 for Rocky Mountain Region and one for Great Basin Region), 2 repeater missions for the Big Horn National Forest, 2 false alarms, 1 cargo mission for the BLM on the Wind River Basin District, 1 reconnaissance flight for Big Horn National Forest, and all fire days in Sublette County.

Fire break downs:

9 county fires with 4 in Converse, 2 in Albany, and 1 in Campbell, Sheridan, and Platte. 5 BLM fires with 3 on the Wind River Basin District and two on the High Plains District BLM. 5 Forest Service fires with 3 on the Medicine Bow-Routt National Forest and 2 on the Bridger-Teton National Forest. 2 Wyoming State Forestry Division fires both in D2. 1 South Dakota State fire, flying on the Vineyard Fire outside of Hot Springs, SD.

Wyoming State Helitack hosted 15 detailers for the 2018 season: 5 from the Big Horn National Forest, 4 from the Medicine Bow-Routt National Forest, 3 from Wyoming State Forestry, 1 from High Plains District BLM, 1 from Wind River Basin District BLM, and 1 from Platte County.

Helitack also sent out 9 personnel to help with large fire support throughout the season. The assignments consisted of 3 different Type 2IA hand crew support roles, 2 DIVS assessments, 1 HEB2 assessment, 1 HMGB assignment, 1 ABRO assignment, and 1 Engine crew member assignment.

2BH

Helicopter 2BH had a crew structure total of 9 individuals with 1 permanent full time, 5 career seasonals, and 3 temporary seasonal employees. Even with the larger crew size, we still had 134 days of detailers received. These were individuals from High Desert District BLM, Oregon BLM, Flathead National Forest, Cherokee Hotshots and other locations.

The helicopter, based out of Rawlins, WY, is contracted with the BLM and completed its 2nd year of a 5 year contract with an Astar B-3. The helicopter was under the primary contract for 90 days and extended for an additional 23 days. The Helitack Crew then staffed an On-Call Contract for 5 additional days. The High Desert Helitack Crew flew approximately 182 hours, all for fire suppression. Over 102 hours of that was flown with in the Casper Dispatch zone and the other nearly 80 hours were flown off zone. Helicopter 2BH responded to 29 initial attacks and 7 extended attack fires for the season. The crew transported 470 individuals, delivered 90,901 gallons of water from the bucket, and delivered 29,448 pounds of cargo in support of these fires. The helitack crew also provided personnel support to fires, such as 54 days of Helibase Management, 70 days of Helicopter Mangers, 216 days of helicopter crew members work, 14 days of Aircraft Base Radio Operators, and 3 Days of PLDO. In addition to the aviation support provided, Helicopter 2BH had 17 days of incident management as ICT4s, 5 days of ICT5, 41 days of FFT1, and 72 days of FFT2 on line assignments.